



THE MOST POWERFUL MODULAR TRADE SHOW SYSTEMS IN THE WORLD

Fusion Systems by Abex

# THREESIX

pack power like this in an ordinary case?  
**we wouldn't dare.**



Every Fusion case is clearly marked for the location of every component

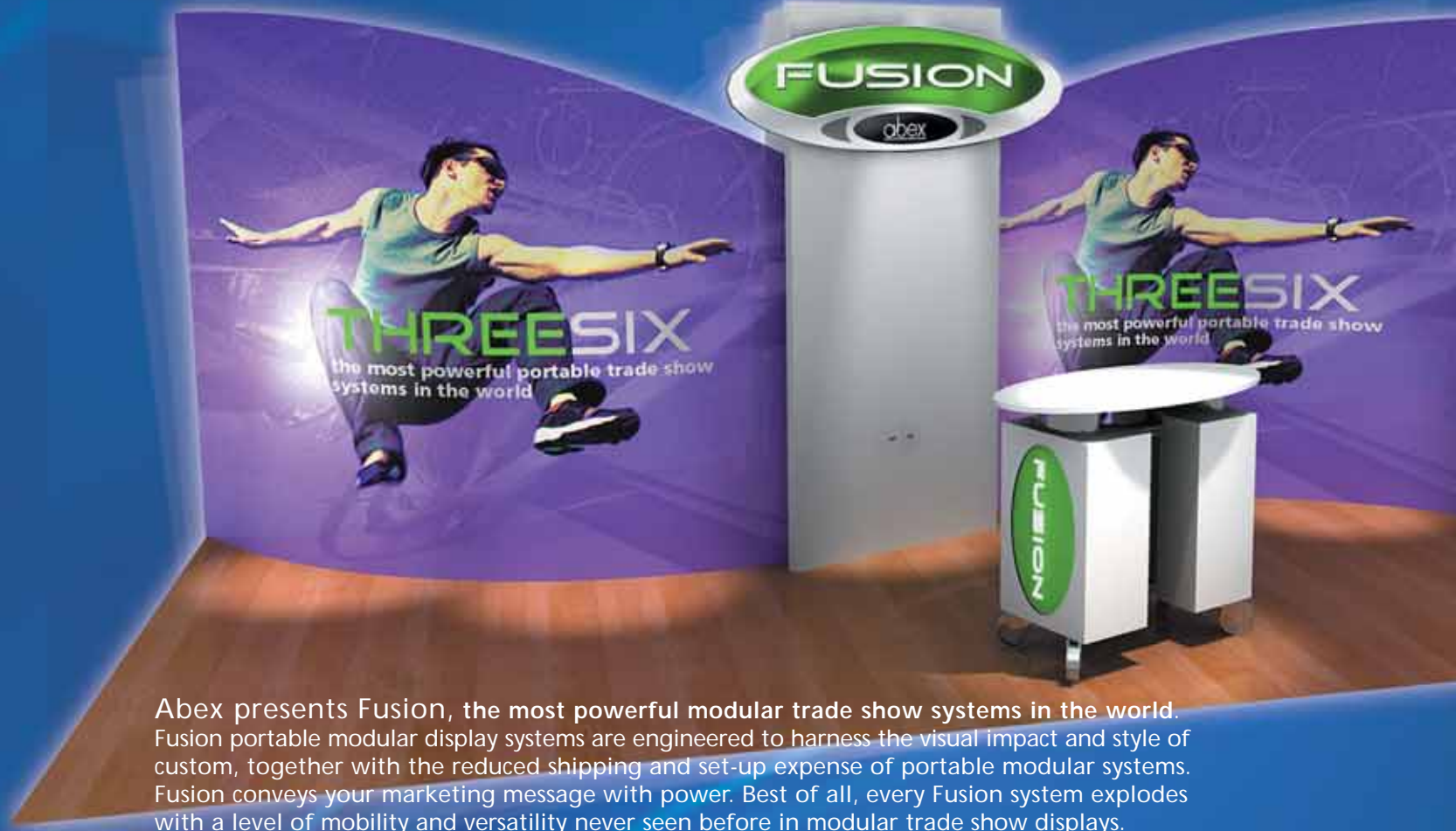
Each component's level and location in the exhibit is clearly designated

L2 46

All Fusion cases are rotomolded for strength and reduced weight to lower shipping and drayage costs

## Fusion transport tub with labeling system

The Fusion labeling system represents the result of a multiyear, industrial design program. Each component is color-coded and sequentially numbered for quick and easy identification of each part and its location. The position of each component is clearly marked inside the tub as well as on each tub's packing list. Coordinated with easy-to-understand set-up instructions, the packing diagrams facilitate quick set-up and tear-down.



Abex presents Fusion, the most powerful modular trade show systems in the world. Fusion portable modular display systems are engineered to harness the visual impact and style of custom, together with the reduced shipping and set-up expense of portable modular systems. Fusion conveys your marketing message with power. Best of all, every Fusion system explodes with a level of mobility and versatility never seen before in modular trade show displays.

**Find the Fusion System that's right for you.**



For more information about Fusion and the entire line of Abex portable modular exhibit systems, contact your local Abex distributor:

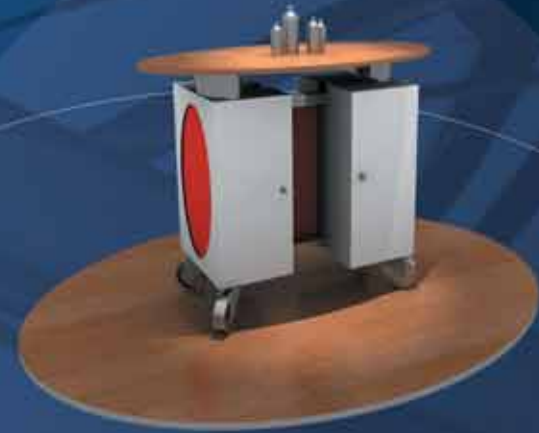


# create your own Fusion THREESIX

Fusion packages are available in a wide variety of 10 x 10 and 10 x 20 foot models that are as versatile as they are powerful. Every Fusion package allows you to project a strong corporate identity and easily integrate the features like monitors, graphics, lightboxes, and product displays you need.

## Fusion Mobile Module™

Fusion's unique castered building block allows each system to be reconfigured "on the fly" for the ultimate in versatility and mobility on the show floor.



COUNTER MODULE™

Find the Fusion system that's right for you.

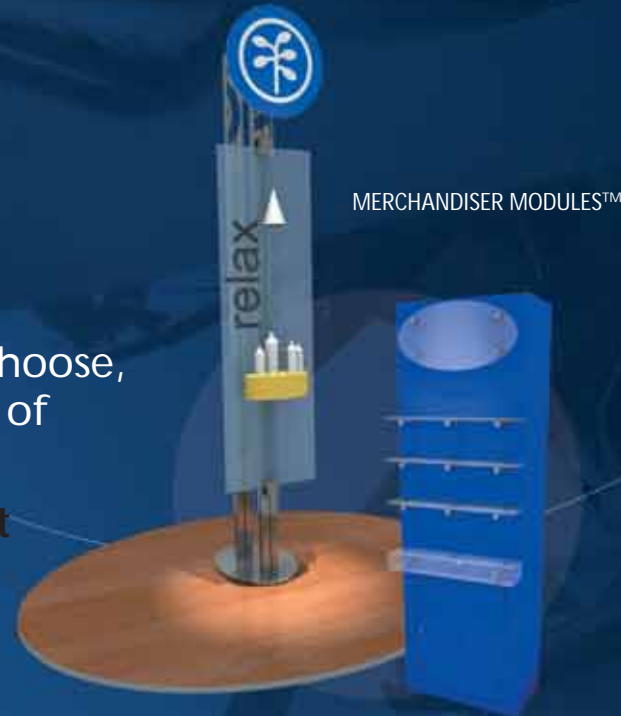
Each Fusion system is available in four Series, allowing you to tailor your Fusion System to meet your unique exhibit marketing objectives.



MEDIA MODULE™

Whichever Fusion package and series you choose, your exhibit will be the definitive synthesis of exhibit style, impact and efficiency.

Start a reaction at your next show or event with Fusion by Abex.



MERCHANDISER MODULES™



## KORE

### Fusion/Kore Series

Fusion Kore combines aluminum extrusions, laminate panels, and fabric to create exhibits that virtually explode with visual impact on the show floor and offer a degree of versatility and mobility never seen before in a modular system.

## GRAFIK

### Fusion/Grafik Series

The Grafik Series provides enhanced delivery of advertising and sales messages through the addition of lightboxes and graphic panels in a variety of sizes.



## PRODUKT

### Fusion/Produkt Series

The Produkt Series incorporates unique POP and merchandising features to turn your exhibit into a virtual showroom on the show floor.



## TEK

### Fusion/Tek Series

Designed for technology delivery, fusion media modules allow for the integration of a variety of LCD monitors and other displays.