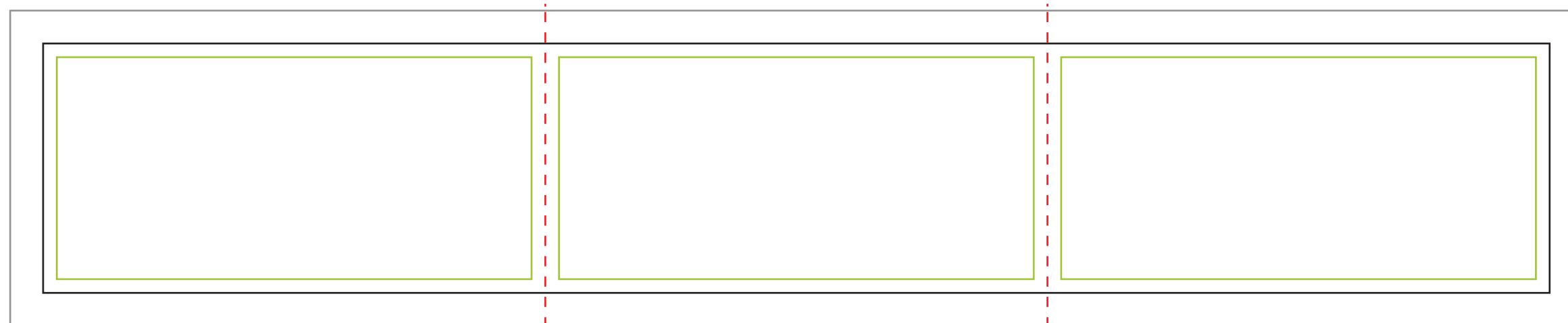


Finished size
6ft W x 36in H



- CMYK color
- Resolution of at least 100 dpi @ full size/100%
- Outline fonts and embed linked images if creating art file in Illustrator

Please check the following:

*All company details (phone/fax)
Correct colours are used
Correct size banner is used
Positioning of artwork
Quantities
Spelling*

Please note that because of the way we see light, colours printed with ink on paper look different to colours displayed on a computer screen. It is therefore essential that the correct corporate colours be specified by the client before printing. Providing pantone colours ensures the colours are printed as close as possible to your corporate colours.

Bleed line 76.77 x 45.28 in

Seam line 72.05 x 35.83 in

Safe area 68.11 x 31.90 in

Important

YOUR PROOF MUST BE APPROVED BY:

TO MEET SHIP DATE OF:

NOTE: Changes to this proof will require approval of revised proof.

Please choose one

- A. This proof is approved. I authorize the production of my graphics without viewing a test strip. Proof must be approved by noon PST to start production the same business day.
- B. Please send me a test strip. I understand that selecting this option will add additional production and shipping time. Please confirm turn-around time with your project manager.

NOTE:

All graphics must be built with a resolution of at least 100 dpi at the full graphic layout size. All graphics must be created in CMYK color mode to ensure optimal color matching. If specific color matching needs are essential, you MUST provide a PMS color and request a test strip or we cannot guarantee exact color matching. This will add 4+ days to your production schedule, but will ensure a match closest to your preferred color. Make sure to flatten all images (if working in Photoshop) and outline all text (if working in Illustrator) to ensure nothing is lost. Be aware of all viewable areas and guides that may cut your graphic off (ie. dotted lines show where the graphic wraps around and may not be visible from the front). Production will not begin until final approval of E-proof is received.

Acceptable File Formats:
Photoshop (.PSD or .TIFF), Illustrator (.AI or .EPS).

We can not accept InDesign (.ID), Quark, CorelDraw, Publisher, PowerPoint or Word Document files

If you are using any software other than Adobe Illustrator or Photoshop to create your layout, and do not require color matching, please submit your artwork as one of the following file types: JPG, PDF or TIFF.

Date: _____

Order #: _____

Signature: _____

Client: _____